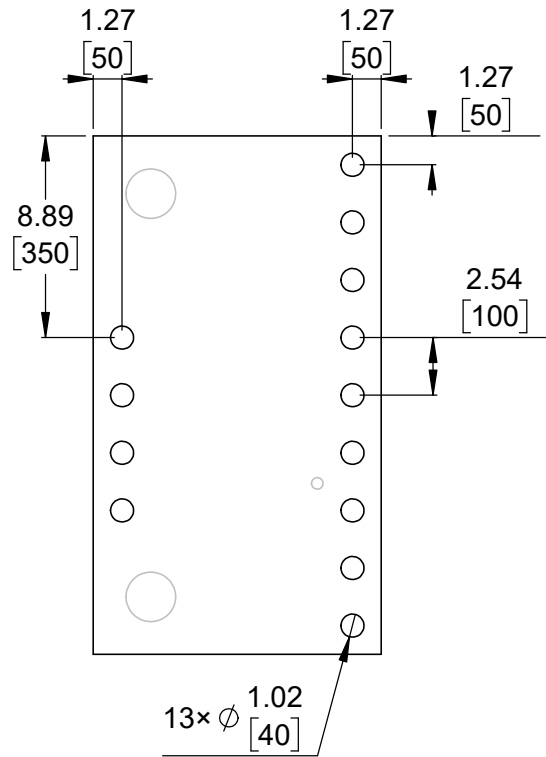
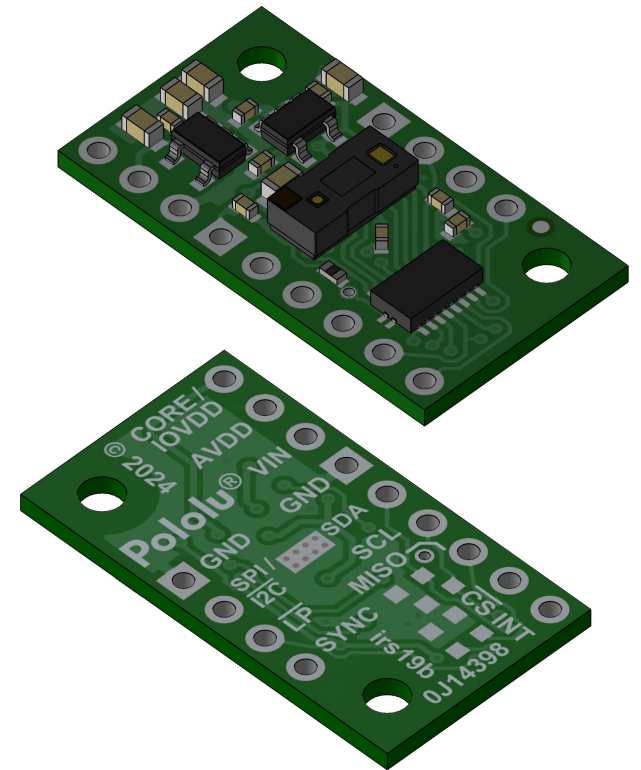


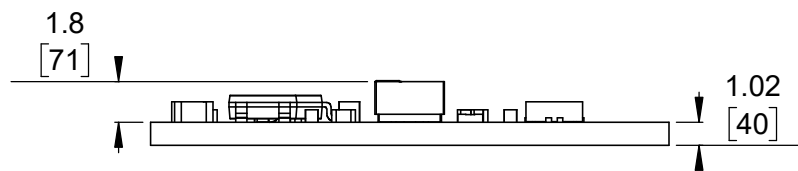
① Board dimensions (top view)
Scale 3:1



② Connector callouts (bottom view)
Scale 3:1



③ Isometric view
Scale 3:1



④ Profile
Scale 3:1



⑤ Actual size
Scale 1:1

- ①. Intended for #2 and M2 screws.
- ②. To get the specified scale, select 100% in print settings.
- ③. Drill location tolerance: ± 0.1 [± 5].
- ④. Board edge tolerance: ± 0.3 [± 10].

https://www.pololu.com/product/3419	
Name: VL53L8CX Time-of-Flight 8x8-Zone Distance Sensor Carrier with Voltage Regulators, 400cm Max	Item number: 3419
Drawing date: 14 February 2024	Dev code: irs19b
Units: mm [mil]	Material: mixed

